

Savernake Road, Hampstead, NW3 2JR

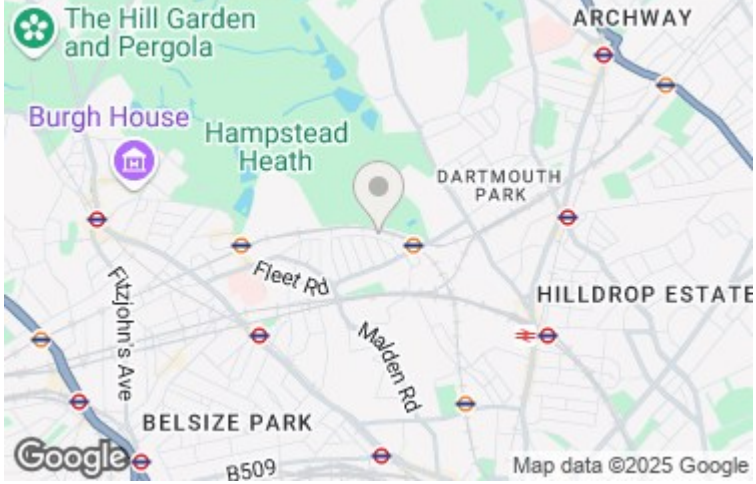
£1,100,000

A beautifully presented three bedroom apartment, arranged over the upper floors of a converted Victorian property. With stunning views to the rear over Hampstead Heath, this immaculate flat benefits from naturally bright rooms throughout, ample available storage space and a large private roof terrace.

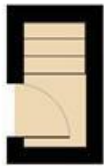
- THREE BEDROOMS
- BATHROOM
- AMPLE AVAILABLE STORAGE
- SHARE OF FREEHOLD
- RECEPTION ROOM
- EN-SUITE SHOWER ROOM
- EPC D
- SEPARATE KITCHEN
- PRIVATE ROOF TERRACE OVERLOOKING HAMPSTEAD HEATH
- COUNCIL TAX BAND F







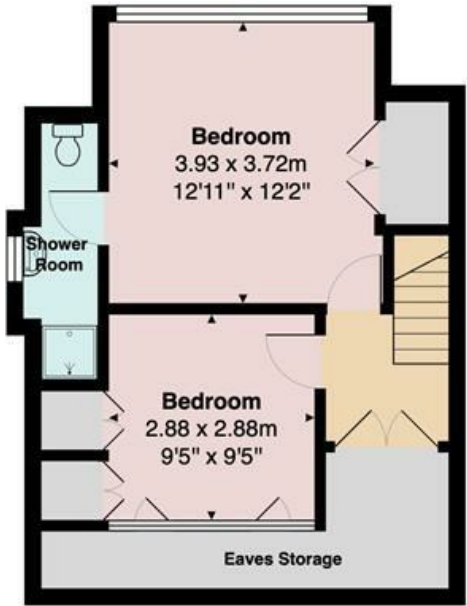
Savernake Road, LONDON, NW3 2JR



First Floor



Second Floor



Third Floor

Total Area: 90.2 m² ... 971 ft² (excluding eaves storage)

All measurements are approximate and for display purposes only.

These details are subject to contract

Energy Efficiency Rating		
	Current	Potential
Very energy efficient - lower running costs		
(92 plus) A		
(81-91) B		
(69-80) C		
(55-68) D		
(39-54) E		
(21-38) F		
(1-20) G		
Not energy efficient - higher running costs		
	67	78
England & Wales	EU Directive 2002/91/EC	

Environmental Impact (CO ₂) Rating		
	Current	Potential
Very environmentally friendly - lower CO ₂ emissions		
(92 plus) A		
(81-91) B		
(69-80) C		
(55-68) D		
(39-54) E		
(21-38) F		
(1-20) G		
Not environmentally friendly - higher CO ₂ emissions		
England & Wales	EU Directive 2002/91/EC	